

Medium Voltage Motor Control Solutions
for the Water/Wastewater Industry

A young child with dark hair is drinking water from a fountain shaped like a dinosaur's head. The child is cupping their hands under the water stream. The background is a blurred green landscape.

Ampgard XP3 – Delivering Peace of Mind for the Wastewater Industry

EATON

Powering Business Worldwide



Every Water or Waste Water Facility operator depends upon reliable power, simple and quick diagnostic of any potential medium voltage motor issues and the peace of mind that comes with knowing your facility is operating at optimal levels.

Eaton's Ampgard XP3

The next evolution in Medium Voltage Motor Control delivers that peace of mind!



AMPGARD XP3

The evolution of Motor Voltage Motor Control

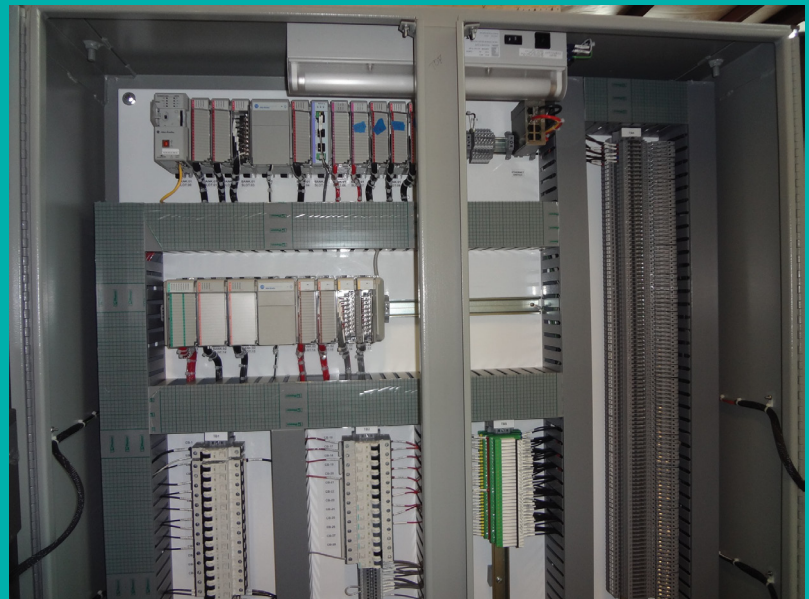


AMPGARD XP3 integrates the familiar AMPGARD medium voltage starter with new protection, diagnostic, and control components to deliver a medium voltage starter of unmatched performance.

The AMPGARD XP3 takes communication and information to the next level with multiple communications options available – including Ethernet, Modbus, and Profibus as well as integrated email notification of important events.

AMPGARD XP3 utilizes contactor mounted current and voltage sensors along with a protection and control board as the heart of the system. The sensors employ Rogowski coils for current input and a divider network for voltage input.

These technologies allow the sensor to work over a wide range of currents and voltages, resulting in a single style contactor for 400A starters and a single style contactor for 720A starters. This flexibility makes upgrading horsepower and the resulting change of motor protection a simple operation.





AMPGARD XP3 unique protection and diagnostic features include:

- Contactor-fuse coordination with minimum contactor clearing time
- Contactor health algorithm to ensure proper operation of the power circuit vacuum contactors
- Thermal Age of motor display helps predict motor winding health
- Fault Current Available at the starter along with Personal Protective Equipment (PPE) requirement
- Sensitive Ground fault detection at current levels down to 3 amperes in standard configuration (Optional sensing to .25 amperes also available)
- A low voltage door mounted "Starter Display Module" (SDM) provides important starter operating and protection information while communicating with the Central Display Module and the Motor Protection and Contactor Control Module (MPCC)
- A Central Display Module (CDM) with touch screen capabilities communicates with every starter in the lineup, eliminating the need to go to the front of each starter to operate the starter or determine starter status
- The CDM displays the status of all starters while allowing the operator to view equipment drawings, instruction books, and renewal parts requirements
- Digital and Analog I/O boards provide control circuit flexibility with minimal wiring changes. The Eaton AMPGARD Medium Voltage Motor Control product line offers you a complete suite of motor control products including FVNR, RVAT, and RVSS starters and AMPGARD SC9000 Adjustable Frequency Drives

Contact your Eaton Sales Engineer for more details and visit us at [Eaton.com/.....](http://Eaton.com/)

Eaton Corporation

Electrical Sector
1111 Superior Ave.
Cleveland, OH 44114
United States
Eaton.com

© 2012 Eaton Corporation
All Rights Reserved
Printed in USA
Publication No. xxxxxxxx / LFD20121
September 2012

Eaton is a registered trademark
of Eaton Corporation.

All other trademarks are property
of their respective owners.